

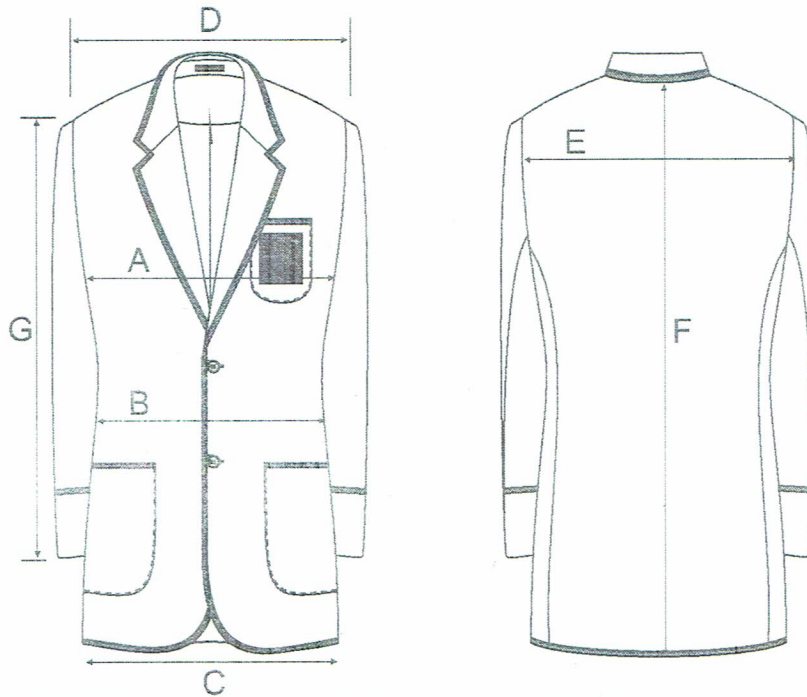
Style Specification

STYLE : BZ 0262 1BK

Mens jacket

DATE :13-12-18

REVISION : 2



PLEASE NOTE : ALL MEASUREMENT ARE IN CENTIMETRES.

| SIZE | 80 | 84 | 88 | 92 | 96 | 100 | 104 | 108 | 112 |
|--|------|------|------|------|-----|------|------|------|------|
| A CHEST At underarm | 94 | 98 | 102 | 106 | 110 | 114 | 118 | 122 | 126 |
| B WAIST 16cm blw armhole | 85 | 89 | 93 | 97 | 101 | 105 | 109 | 113 | 117 |
| C HEM | 94 | 98 | 102 | 106 | 110 | 114 | 118 | 122 | 126 |
| D SHOULDER point to point | 41 | 42 | 43 | 44 | 45 | 46 | 47 | 48 | 49 |
| E ACROSS BACK | 40 | 41 | 42 | 43 | 44 | 45 | 46 | 47 | 48 |
| F CENTRE BACK LENGTH Neck to hem REGULAR | 77 | 77.5 | 78 | 78.5 | 79 | 79.5 | 80 | 80.5 | 81 |
| F CENTRE BACK LENGTH Neck to hem SHORT | 74 | 74.5 | 75 | 75.5 | 76 | 76.5 | 77 | 77.5 | 78 |
| F CENTRE BACK LENGTH Neck to hem TALL | 80 | 80.5 | 81 | 81.5 | 82 | 82.5 | 83 | 83.5 | 84 |
| F CENTRE BACK LENGTH Neck to hem X TALL | 83 | 83.5 | 84 | 84.5 | 85 | 85.5 | 86 | 86.5 | 87 |
| G SLEEVE LENGTH Crown to cuff REGULAR | 62 | 62.5 | 63 | 63.5 | 64 | 64.5 | 65 | 65.5 | 66 |
| G SLEEVE LENGTH Crown to cuff SHORT | 59 | 59.5 | 60 | 60.5 | 61 | 61.5 | 62 | 62.5 | 63 |
| G SLEEVE LENGTH Crown to cuff TALL | 65 | 65.5 | 66 | 66.5 | 67 | 67.5 | 68 | 68.5 | 69 |
| G SLEEVE LENGTH Crown to cuff XTALL | 69 | 69.5 | 70 | 70.5 | 71 | 71.5 | 72 | 72.5 | 73 |
| 1ST BUTTON PLACEMENT FROM HPS | 44.8 | 45.4 | 45.9 | 46.5 | 47 | 47.6 | 48.1 | 48.7 | 49.2 |

| SIZE | 116 | 120 | 124 | 128 | 132 | 136 | 140 | 142 | TOL +/- |
|--|------|------|------|------|------|------|------|------|---------|
| A CHEST At underarm | 130 | 134 | 138 | 142 | 146 | 150 | 154 | 158 | 2 |
| B WAIST 16cm blw armhole | 121 | 125 | 129 | 133 | 137 | 141 | 145 | 149 | |
| C HEM | 130 | 134 | 138 | 142 | 146 | 150 | 154 | 158 | |
| D SHOULDER point to point | 50 | 51 | 52 | 53 | 54 | 55 | 56 | 56.5 | 1 |
| E ACROSS BACK | 49 | 50 | 51 | 52 | 53 | 54 | 55 | 56 | |
| F CENTRE BACK LENGTH Neck to hem REGULAR | 81.5 | 82 | 82.5 | 83 | 83.5 | 84 | 84.5 | 85 | 1 |
| F CENTRE BACK LENGTH Neck to hem SHORT | 78.5 | 79 | 79.5 | 80 | 80.5 | 81 | 81.5 | 82 | |
| F CENTRE BACK LENGTH Neck to hem TALL | 84.5 | 85 | 85.5 | 86 | 86.5 | 87 | 87.5 | 88 | |
| F CENTRE BACK LENGTH Neck to hem X TALL | 87.5 | 88 | 88.5 | 89 | 89.5 | 90 | 90.5 | 91 | 1 |
| G SLEEVE LENGTH Crown to cuff REGULAR | 66.5 | 67 | 67.5 | 68 | 68.5 | 69 | 69.5 | 69.7 | |
| G SLEEVE LENGTH Crown to cuff SHORT | 63.5 | 64 | 64.5 | 65 | 65.5 | 66 | 66.5 | 66.7 | |
| G SLEEVE LENGTH Crown to cuff TALL | 69.5 | 70 | 70.5 | 71 | 71.5 | 72 | 72.5 | 72.7 | |
| G SLEEVE LENGTH Crown to cuff XTALL | 73.5 | 74 | 74.5 | 75 | 75.5 | 76 | 76.5 | 76.7 | |
| 1ST BUTTON PLACEMENT FROM HPS | 49.7 | 50.3 | 50.8 | 51.4 | 51.9 | 52.4 | 53 | 53.3 | |