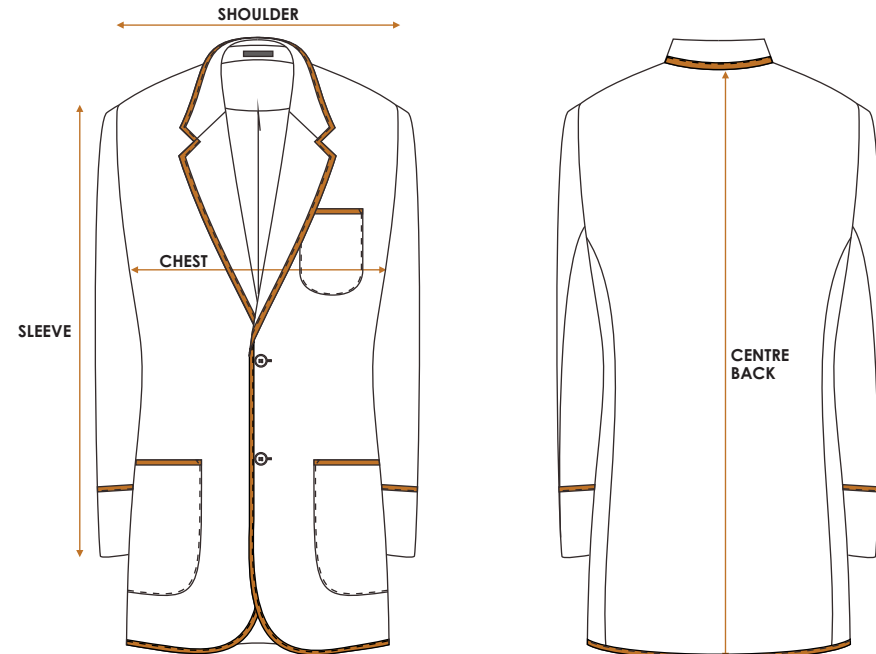


BLAZER SIZE GUIDE



Please use this handy guide to help you determine which size to order.
If you are between sizes it is recommended to go for the bigger size option unless you desire a closer fit.

- CHEST** Measure around from underarms or from the widest part, with arms relaxed by your side
- SHOULDER** Measure from the edge of one shoulder to the other
- CENTRE BACK** Measure from the base of neck to lower back
- SLEEVE** Measure from the edge of shoulder down to base of wrist



SIZE	80	84	88	92	96	100	104	108	112	116	120	124	128	132	136	140	142
CHEST (CM)	94	98	102	106	110	114	118	122	126	130	134	138	142	146	150	154	158
SHOULDER (CM)	41	42	43	44	45	46	47	48	49	50	51	52	53	54	55	56	56.5
CENTRE BACK LENGTH (CM) REGULAR	77	77.5	78	78.5	79	79.5	80	80.5	81	81.5	82	82.5	83	83.5	84	84.5	85
CENTRE BACK LENGTH (CM) SHORT	74	74.5	75	75.5	76	76.5	77	77.5	78	78.5	79	79.5	80	80.5	81	81.5	82
CENTRE BACK LENGTH (CM) TALL	80	80.5	81	81.5	82	82.5	83	83.5	84	84.5	85	85.5	86	86.5	87	87.5	88
CENTRE BACK LENGTH (CM) X TALL	83	83.5	84	84.5	85	85.5	86	86.5	87	87.5	88	88.5	89	89.5	90	90.5	91
SLEEVE LENGTH (CM) REGULAR	62	62.5	63	63.5	64	64.5	65	65.5	66	66.5	67	67.5	68	68.5	69	69.5	69.7
SLEEVE LENGTH (CM) SHORT	59	59.5	60	60.5	61	61.5	62	62.5	63	63.5	64	64.5	65	65.5	66	66.5	66.7
SLEEVE LENGTH (CM) TALL	65	65.5	66	66.5	67	67.5	68	68.5	69	69.5	70	70.5	71	71.5	72	72.5	72.7
SLEEVE LENGTH (CM) X TALL	69	69.5	70	70.5	71	71.5	72	72.5	73	73.5	74	74.5	75	75.5	76	76.5	76.7